



JUNE 5, 2026

Tukhe'ti



Former Governor Walter Dasheno was honored on May 21, 2026 at the third convening of the Pueblo Convocation entitled, "Where we have been, Where we are going from here."

Former Governor Dasheno was selected to receive the Pueblo Advocate Award in recognition of his service and contributions in support of our Pueblo People and Pueblo way of life.

The Pueblo Convocation letter further states:

"Our ancestors over generations have offered prayers that along our journey that we would be blessed with people like you to protect all the Gifts of Our Creator that sustain us as a People. The late Dr. Joe Sando left the indelible words to pay tribute and honor people like you in his own words, "*Because of people like you, our Pueblo People will survive.*" True to these words, you have contributed in ways that have never compromised our core Pueblo values."

Kha'p'o Community School also paid tribute to Uncle Walter Dasheno, " In lifelong service to Pueblo communities, having served an extraordinary 13 terms as Governor of Santa Clara Pueblo. His leadership and advocacy have left a lasting mark across Pueblo Country. Beyond his titles, it is his deep connection to culture, tradition, and language, along with his kindness, humor, and genuine love for people that defines his legacy. Even in retirement, he continues to give back, sharing his knowledge as a Tewa teacher at Kha'p'o Community School. We are deeply honored to have Thatha Walter as part of our school community"

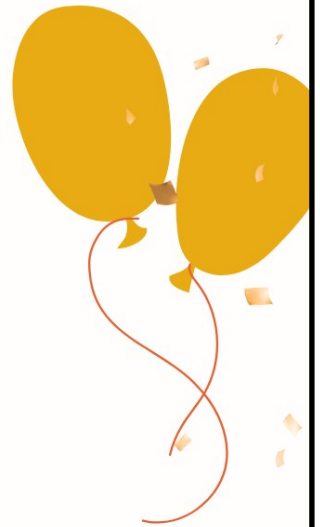
Also, Former Governor Dasheno is a proud veteran having served in the Navy. He was selected by the Northern New Mexico Honor Flight to go to Washington, D.C., along with other veterans, to visit the military memorials. The trip will leave on June 3rd. Former Governor Dasheno has attended many of our Santa Clara Pueblo Veteran meetings to encourage our continued recognition of the men and women from the Pueblo who served and are serving in the military.



CONGRATULATIONS!!
TO THE CLASS OF 2026



WE WISH YOU ALL THE BEST IN
YOUR FUTURE ENDEAVORS!



**CONGRATS TO THE PROMOTING CLASSES
AT KHAPO COMMUNITY SCHOOL AND
SANTA CLARA PUEBLO HEAD START**



A BIG THANK YOU!!

TO EVERYONE WHO CAME TO OUR BLOCK PARTY AND MADE IT A SUCCESS!! THANK YOU TO THE DEPARTMENTS THAT SHOWED UP TO SHARE INFO WITH THE COMMUNITY AND TO CHR FOR COORDINATING THE FUN RUN/WALK.



A SPECIAL SHOUT OUT TO THOSE THAT VOLUNTEERED TO BE IN THE DUNK TANK:

JENNIFER VIGIL
ROBERT HONAWA
JEREMY OYENQUE
OFFICER TRUJILLO
AND...

LT. GOVERNOR JESSE GUITERREZ



AND FINALLY, THANK YOU TO ALL THE FIRE STATIONS THAT SHOWED UP: CHAMITA, ESPANOLA, OJO SARCO, PICURIS, SANTA FE, TESUQUE, CHIMAYO, AND SANTA CLARA PUEBLO.

SANTA CLARA

POST OFFICE BOX 580
(505) 753-7330
(505) 753-5375 Fax



INDIAN PUEBLO

ESPANOLA, NEW MEXICO
87532
OFFICE OF TRIBAL SHERIFF

To: All Community Members

Fr: Donald Suazo, Tribal Sheriff

Date: June 1, 2026

RE: Flow of traffic in Village area for Feast Day

This letter is to inform the Community of changes in the flow of traffic on June 13, 2026 Feast Day.

On this day the flow of traffic will turn into a one-way street on (1) Back Wall Road South to Cloud Road (2) Hillside Road Southeast to Back Wall then South on Cloud Road (3) Drum Road South onto Cloud Road then South exiting at State Road 30. Wild Rose Road will be closed for the day on June 13th 2026 at the entrance/exit off State Road 30 and at KEE Street. This will take effect at midnight on June 12th, 2026.

Please be mindful of all signs and personnel that are posted in areas. Also, as a reminder the speed limit in the Village Area is 10 miles per hour (MPH) or otherwise posted.

Vending will only be allowed in designated vending area next to the Church. If others are set up they will be asked be taken down and move to the designated area.

Please remind family members, visitors and guests that there will be no cell phones allowed in Main Village, no picture taking or recording of any kind. All rules will be posted in different locations.

If you have any questions you may contact my office at (505) 753-7330 or Sheriff Cell Phone (505) 927-0085.



Wild Rose Road in **RED** will be close day of Feast for vendors
All roads in **ORANGE** will be ONE WAY only. All heading South on
to Cloud road then to State Road 30.

The **Red Box** will be the NO CELL Phone Area which all will be
confiscated if out .

Santa Clara Pueblo's forestry program is rebuilding a fire-damaged landscape while expanding its greenhouse and nursery capacity to restore ecological health, protect cultural resources, and strengthen community resilience. The projects underway today are the result of more than a decade of coordinated recovery following the 2011 Las Conchas Fire, which devastated most of Pueblo's forested lands and destabilized the watershed.

Restoring a Fire-Damaged Watershed



Santa Clara Pueblo Forestry continues to lead large-scale restoration across the Santa Clara Canyon watershed. Their work focuses on:

- **Watershed stabilization** — Dredging, levee improvements, and installation of gabion structures to reduce flood risk and rebuild pond, stream capacity.
- **Forest recovery** — Mulching, contour felling, and reforestation to stabilize slopes and encourage natural regeneration.
- **Erosion control** — More than 4,000 log and boulder structures have been installed to slow water, capture sediment, and rebuild channel stability.
- **Cultural stewardship** — Protecting sacred sites and restoring access to canyon areas that were closed for over 20 years.

These efforts are part of a long-term, resilience-based strategy to adapt to changing wildfire and climate conditions.

Expanding the Tribal Greenhouse & Native Tree Nursery



A major highlight of recent years is Pueblo's investment in greenhouse and nursery infrastructure:

- **New Tribal Tree Nursery** — Supported by the Tribal Forest Protection Act, the Pueblo is building a full nursery program to grow native species for reforestation and riparian restoration.
- **Greenhouse construction** — Crews from the Ancestral Lands Conservation Corps assisted with erecting greenhouses and preparing cold-storage foundations.
- **Seedling production** — The nursery will supply plant material for both high-elevation forest recovery and low-elevation riparian corridors, strengthening the Pueblo's self-sufficiency in restoration work.
- **Santa Fe Indian School partnership** — Greenhouse utilization supports education and community engagement.

This nursery is central to long-term restoration planning, ensuring a reliable supply of culturally important and climate-resilient native plants.

Riparian & Wildlife Corridor Restoration



With support from the America's Ecosystem Restoration Initiative, Santa Clara Pueblo is restoring more than **40 miles of connected stream corridors** from the Jemez Mountains to the Rio Grande Valley.

Key goals include:

- **Rebuilding riparian habitat** for native species
- **Removing invasive plants** and re-establishing native vegetation
- **Reconnecting wildlife corridors** across multiple elevations
- **Reviving cultural access** to canyon areas central to Pueblo identity

Forestry Director Daniel Denipah emphasizes that restoring these corridors reconnects the community with landscapes that hold deep cultural meaning.

Reforestation: Planting the Next Generation of Forests



Reforestation remains one of the most visible and hopeful parts of Pueblo's forestry work:

- **750,000+ trees planted** in partnership with The Nature Conservancy and other organizations.
- **Goal of 100,000 seedlings** planted in burned areas to rebuild future forests.
- **Climate-informed plantings** are placed in microsites that maximize shade, moisture, and survival under hotter, drier conditions.
- **Daily planting rates of 4,400 seedlings** by specialized crews.

These young ponderosa pines and other native species represent the long-term vision of a healthy, resilient forest that will support future generations.

Partnerships Strengthening the Work



Santa Clara Pueblo's forestry achievements are made possible through collaboration with:

- **Rio Chama CFLRP** — Supporting watershed restoration and workforce development.
- **Forest Stewards Guild** — Assisting with plant material supply chains.
- **National Fish & Wildlife Foundation** — Funding riparian and wildlife corridor restoration.

MEN'S HEALTH FAIR 2026

"More Good Days, Together" was this year's theme for Mental Health Awareness Month, which is celebrated every month of May since 1949. This year's theme encourages us all to reflect on what a "good" day looks like, both for ourselves, and our community. This year, the Santa Clara Pueblo Health Council, spearheaded by Community Health Planner Jonathon Tafoya, put on a Men's Health Fair for the community.

The morning was filled with a warm welcome from Lt. Governor Jesse Gutierrez followed by a brief introduction of the 6 Original departments (OG 6); Behavioral Health, CHR/Diabetes Programs, Department of Youth and Learning, Social Services, Tribal Police, and Tribal Courts. Participants were incentivized with "goodies" bags filled with information about our presentations, reference flyers, "dude wipes" for all their essential needs and a long sleeve drift t-shirt for those fishing, hunting, everyday chores, etc. outdoor activities.

We had presentations from Albuquerque Area Southwest Tribal Epidemiology Center (AASTEC), Food Network's "Chopped" Chef Ray Naranjo (MANKO), Rio Arriba County Health Council representative Diego Lopez, Department of Health Alexander Cutler & SCPD Sargent Keith Miller, and former Ironman Triathlete Jonathon Tafoya. We had collaborative partners from the New Mexico Alliance of Health Council Executive Director Valeria Alacon, UNM Health Sciences Community Engagement Specialist Randy Benally, and NM Department of Health's Crystal Archuleta join us for the morning. Throughout the presentations, the participants were given tickets for door prizes and the presentations ended with a mental health activity. We reminded the participants that mental health care is crucial as it helps foster understanding and acceptance, encourages a supportive community, and enhances overall long-term well-being.

As Lt. Governor Gutierrez closed us with prayer, we reflected on the day and reminded participants there will be lunch served in the DYL Recreation Center. Big thank you to our community members whom came out for this event, the Governor's and Tribal Administrator's office for their continuing support of the Health Council's initiatives, and to all the presenters whom gave their time and spread their knowledge to the Pueblo of Santa Clara.



In need of a home?

Come fill out an application today!

Housing and Urban Development (HUD) 2025 Guidelines								July 2025
% Median Income	1 Person	2 Persons	3 Persons	4 Persons	5 Persons	6 Persons	7 Persons	8 Persons
80 %	\$58,352	\$66,688	\$75,024	\$83,360	\$90,029	\$96,698	\$103,366	\$110,035

↗ Total Income of all individuals 18 years and older in the household. ↖

- Copy of Driver License or ID card(s)
- Copy of Social Security Card(s)
- Tribal Enrollment card(s)
- Copies of Last 4 current pay stubs from your Employer
- Income Verification: Social Security benefits, AFDC, JTPA, Food Stamps and Unemployment
- Last year's Income Tax Returns for State and Federal

Per Federal regulations: ALL applications must be updated on a yearly basis.



Owning a home is still
THE DREAM!

For more information please stop by our offices or give us a call at 505-753-6170.

Santa Clara Catholic Church

Mass Schedule—Father Dennis Bosse presiding

June 12 6:00 pm Vespers

June 13 9:00am St. Anthony's Feast Day

June 21 9:30

June 28 9:30



On May 24th, after mass, the church officials led a pilgrimage to bless the fields. The walkers carried the saints in procession from Santa Clara's Church through Santa Clara's field area to the little chapel in Pajarito, La Sagrada Familia de Pajarito. All pilgrims were welcomed into the church and our saints were placed on the alter while a rosary was prayed. Afterwards, lunch was provided by the Vigil Families; the heirs of the original builders of the chapel.

The pilgrimage had great participation from Pueblo members as well as being joined by a pilgrimage group, Guadalupanas and Peligrinos who made this walk a part of their 100 mileage pilgrimage for vocations starting from La Mesilla Catholic Church. The saints were then carried back to our church. It was a beautiful day.





Valles Caldera Trip

Hello everyone, the Senior Center was able to take a few Senior's on tour of the Valle Caldera, on May 22, 2026 with the collaboration from the Rights Protection and DYL and Ben Chavarria from the Parks Department, and our Tour Guide Corey from the Valle Caldera, we were shown a 3-D Show of how, the Valle Caldera was created from the Volcanic explosion many years ago, we were also taken on a back country tour of a place called the Obsidian at the Valle Caldera, where we saw Elk, Coyotes, and Fishermen.

We also had a picnic with the Senior's at the Valle Caldera, which our tour guide Corey talked more about the Valle Caldera.

It is a very Beautiful place to see.

I want to Thank, Danny Naranjo and Isaac Gutierrez for helping us set this Tour of the Valle Caldera for our Senior's to see and Experience the Back Country. Also, thanks to Ben Chavarria and Corey from the Valle Caldera.

Stephen Calvert
Activities Coordinator
Santa Clara Pueblo Senior Center




June

Please call if you are not going to be home for lunch delivery before 9 a.m. @505-692-6244
Menu is Subject to Change
Continue to put your bags out for food delivery. Have a safe and wonderful month. Thank you!

Santa Clara Senior Center Menu

2026

Sunday	Monday	Tuesday	Wednesday	Thursday	Friday	Saturday
	1 Chicken Fried Rice Egg Roll Fortune Cookie	2 Cheeseburger w/lettuce/tomato/onion Pork & Beans	3 Garden Salad w/Cucumber/Tomato/O nions/ Croutons Dressing	4 Tamale Beans Cornbread	5 Goulash Veggie	6
7	8 Squash w/Ground Beef, Onion Corn Tortilla	9 Meat Loaf, Mashed Potatoes w/Gravy California Blend Veggies <i>Distribution Day/Dine- In only</i>	10 Beef Taco Lettuce, Tomato, Onion Spanish Rice	11 Frito Pie w/ Lettuce/Tomato Cheese Fruit	12 <i>Center Closed St. Anthony's Day</i>	13
14	15 Bean Burrito Red Chilli Sauce/Cheese Carrots	16 Spaghetti w/ Meat Sauce Vegetable Garlic Bread	17 Berry Salad w/Feta Cheese Dressing Chicken Bites	18 Chicos w/ Beef Stew Oven Bread <i>New Mexico Grown</i>	19 <i>Center Closed Juneteenth</i>	20
21 	22 Grilled Cheese Tomato Soup Fruit	23 Beef Stroganoff Green Beans Garlic Bread Stick	24 <i>Center Closed Safe Serv training for cooks</i>	25 Sloppy Joe's Fries Vegetable	26 Garbanzo Stew Oven Bread <i>New Mexico Grown</i>	27
28	29 Chicken/Rice/Carrot/Cel ery Crackers Fruit	30 Tuna Sandwich Chips Carrot Salad				

June

Senior Field Trips Need (5) or more
For Pick up call Senior Center
Casino Trips (5) or more
Field Trips weather permitted
For massages call Senior Center
(505)692-6244
Home Bound Bingo Delivery Monday and Friday

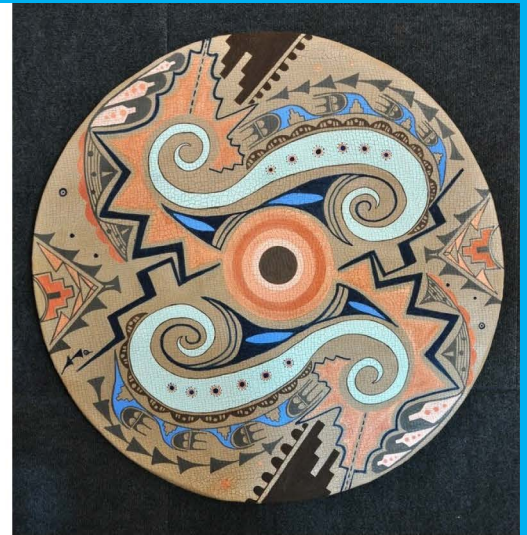
Activities Calendar

2026

Sunday	Monday	Tuesday	Wednesday	Thursday	Friday	Saturday
	1	2 Voting Day	3 Bill Paying 9am / 1pm <i>Ojo Caliente 10 / 12 pm</i>	4 Grocery Shopping 9 am / 1 pm	5	6
7	8 <i>Vital Checks by CHR 10:30 / 12 pm</i>	9 Food Drive 8:30 / 10:30 am	10 Massages 11 am / 1 pm <i>Bowling 12 / 2pm</i>	11	12 <i>Center Closed</i>	13
14	15	16 <i>Commodity Day 9 am</i>	17 <i>Ojo Caliente 10 / 12 pm</i>	18 Father's Day Luncheon Bingo 9:30 am / 1 pm	19 <i>Juneteenth Center Closed</i>	20
21	22 <i>Vital Checks by CHR 10:30 / 12 pm</i>	23	24 Massages 11 am / 1 pm	25	26 <i>Movie Day 12:30 / 2:30 pm</i>	27
28	29	30				

ATTENTION ARTISTS

The State of New Mexico wants to buy
your artwork for Santa Clara Pueblo



CALL FOR ARTWORK

Visual artists in all mediums and styles (weavers, sand painters, silversmiths, beaders, potters, painters, basket makers, photographers, etc.) are encouraged to bring their artwork to the Art in Public Places Open Call to be reviewed by the Santa Clara Pueblo Artwork Selection Committee for possible purchase and permanent installation.

LOCATION & TIME

Artists must bring their completed artworks in person on **Monday, July 20th at 11 AM** to the Pueblo of Santa Clara Gym at 578 Kee Street, Espanola, NM 87532. Please be prepared to stay for up to 2 hours and to fill out a W9 tax form.

BUDGET

The State of New Mexico has \$101,000 to spend to acquire artwork for permanent installation in buildings throughout Santa Clara Pueblo including the Governor's Office, Headstart, Community Health, Adult Day Care Center, Senior Center and Fire Station.

PROCESS

The Santa Clara Pueblo Artwork Selection Committee will review artwork in person and make selections to be purchased by the State. New Mexico Arts will issue payment to the artist/s selected upon receipt of signed contracts and completed installation at the Santa Clara building. This opportunity is part of the Art in Public Places Program.

QUESTIONS

Kiersten Fellrath, New Mexico Arts, Department of Cultural Affairs
Kiersten.fellrath@dca.nm.gov / (505) 699-4910

Daniel Tafoya, Special Projects, Santa Clara Pueblo
dtafoya@santaclarapueblo.org / (505) 692-6309

Artwork image: **Deborah Jajola**, *Eclipse*, 2024, Natural fresco
on wooden panel, Purchased for AIPP Program 2025



New Mexico Indian Affairs Department - Press release

The New Mexico Tribal Infrastructure Fund Board awarded \$92.9 million for 23 infrastructure projects supporting Nations, Pueblos, and Tribes across the state.

Investments will strengthen water and wastewater systems, health care facilities, public safety infrastructure, roads, and community spaces that improve quality of life for Tribal communities while also benefiting surrounding communities.

Pojoaque Pueblo, Santo Domingo Pueblo, San Ildefonso Pueblo, Sandia Pueblo, Isleta Pueblo, Santa Clara Pueblo, Zuni Pueblo, Fort Sill Apache, Jemez Pueblo, San Felipe Pueblo, and multiple Chapters of the Navajo Nation all received awards this cycle.

Since 2006, the Tribal Infrastructure Fund has awarded nearly \$419 million for more than 363 projects across New Mexico.

Special Projects Department states the funding that Santa Clara Pueblo will receive from this fund source will be used for the following projects:

- Guachupangeh Wastewater Project
- South Housing Water Engineering
- Tribal Compound

Free Summer Meals for Kids

June 1st- June 25th, 2026

Serving Times:
Monday – Thursday
11:00 am – 1:00 pm

Eat Great, Play Great!

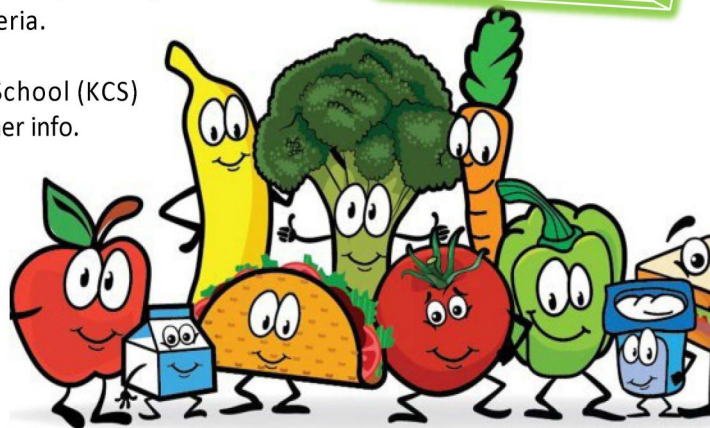
Free Meals for All Children Ages 1-18

Kha'p'o Community School will be providing free lunch meals served at the KCS Cafeteria.

Contact Kha'p'o Community School (KCS) at Ph: (505)-753-4406 for further info.

Location: KCS Cafeteria

625 Kee St, Espanola NM
87532



SANTA CLARA PUEBLO DEPARTMENT OF YOUTH & LEARNING

Mission:

Cultivate lifelong learning and holistic health through education, mentoring and play.

WHAT WE DO

DYL works with schools in NM that has enrolled tribal members . We also host various events throughout the year such as Spring and Fall Children's gatherings. We run afterschool programming and provide P.E. for HeadStart and Kha'p'o Community Schools during the school year. We conduct summer programs, distribute school supplies and offer internships, as well as scholarships.

We also offer adult workshops such as embroidery, sewing, bow-making and more. If you are interested in teaching a workshop please contact us!

For inquiries about gym rentals, chairs & tables please contact Danielle at dchonawa@santaclarapueblo.org

OUR TEAM

Director

Jeremy Oyenque

Office Manager

Vacant

Recreation Specialist

Kenny John

Deputy Director

Nicole Swentzell

Out-of-School Manager

Vacant

Recreation Specialist

Danielle Honawa

College Interns

Kiara Chavarria, Amanda Singer

Tyler Suazo

High School Interns

Kiandra Naranjo-Montoya





Santa Clara Pueblo Drinking Water Quality System Annual Report for 2025
(Distributed June 2026)

The Santa Clara Pueblo Office of Environmental Affairs presents to the Pueblo community the annual drinking water system’s Consumer Confidence Report (CCR) that is required for public drinking water systems in the United States by the Safe Drinking Water Act (SDWA). This report contains information on the community water system and details contaminants monitored through routine sampling January – December 2025. The Public Water System number for the Santa Clara Pueblo community system is 063500166.

The Pueblo is required to test drinking water regularly for signs of microbial contamination. Positive test results could lead to follow-up investigations called assessments and potentially the issuance of public health advisories. Assessments could lead to required corrective actions. The information below summarizes the results of those tests which showed no presence of E. coli.

Calendar Year	Sampling Requirements	Sampling Conducted	Total E. coli Positive	Assessment Triggers	Assessments Conducted
2025	2 samples/ month	12 out of 12	0	0	0


This report is a snapshot of your water quality. Included are details about where your water comes from, what it contains, and how it compares to standards set by regulatory agencies. The Pueblo Utility Department is committed to providing you with information on the drinking water system to inform the users of the system of the efforts to provide safe drinking water.

Do I need to take special precautions?

Some people may be more vulnerable to contaminants in drinking water than the general population. Immuno- compromised persons such as people with cancer undergoing chemotherapy, persons who have undergone organ transplants, people with HIV/AIDS or other immune system disorders, some elderly, and infants can be particularly at risk from infections. These people should seek advice about drinking water from their health care providers. The Environmental Protection Agency (EPA) and Centers for Disease Control (CDC) guidelines on appropriate means to lessen the risk of infection by Cryptosporidium and other microbial contaminants are available from the Safe Water Drinking Hotline (800-426-4791).

Where does my water come from?

Drinking water for the Santa Clara Pueblo water system is produced by two primary wells and one back up well. The water drawn from the groundwater is disinfected with chlorine to get rid of



dangerous bacteria and microorganisms. Disinfection is considered to be one of the major public health advances of the 20th century. The treated water flows through two storage tanks before entering the distribution system. Because the water source is groundwater, surface runoff contamination to the Pueblo drinking water system is not a high risk.

Why are there contaminants in my drinking water?

Drinking water, including bottled water, may reasonably be expected to contain at least small amounts of some contaminants. The presence of contaminants does not necessarily indicate that water poses a health risk. More information about contaminants and potential health effects can be obtained by calling the Environmental Protection Agency's Safe Drinking Water Hotline (800-426-4791).

The sources of drinking water (both tap water and bottled water) include rivers, lakes, streams, ponds, reservoirs, springs, and wells. As water travels over the surface of the land or through the ground, it dissolves naturally occurring minerals and, in some cases, radioactive material, and can pick up substances resulting from the presence of animals or from human activity including:

- **Microbial contaminants**, such as viruses and bacteria, that may come from sewage treatment plants, septic systems, agricultural livestock operations, and wildlife;
- **Inorganic contaminants**, such as salts and metals, which can be naturally occurring or result from urban stormwater runoff, industrial, or domestic wastewater discharges, oil and gas production, mining, or farming;
- **Pesticides and herbicides**, which may come from a variety of sources such as agriculture, urban stormwater runoff, and residential uses;
- **Organic chemical contaminants**, including synthetic and volatile organic chemicals, which are by-products of industrial processes and petroleum production, and can also come from gas stations, urban stormwater runoff, and septic systems;
- **Radioactive contaminants**, which can be naturally occurring or be the result of oil and gas production and mining activities.

In order to ensure that tap water is safe to drink, EPA prescribes regulations that limit the amount of certain contaminants in water provided by public water systems. Food and Drug Administration (FDA) regulations establish limits for contaminants in bottled water which must provide the same protection for public health.

How can I get involved?

The community may address any questions and concerns to the Santa Clara Office of Environmental Affairs, Governor's Office, Utility and Special Projects/Planning office. Community members are also able to express concerns or comments through their Tribal Council Representative and are encouraged to participate in general community meetings. Protection of water sources begins at home with proper disposal of pesticides, oils, chemicals and other hazards. Management of animal waste to prevent storm water runoff from carrying the waste into water channels is another important factor in the protection of Pueblo drinking water sources. The water in the community drinking water system during this reporting period was safe to drink.

DRINKING WATER QUALITY TABLES

The tables below lists all of the drinking water contaminants detected during the calendar year of this report. The presence of contaminants in the water does not necessarily indicate that the water poses a health risk. Unless otherwise noted, the data presented in this table is from testing done in the calendar year of the report. The EPA or the State requires monitoring for certain contaminants less than once per year because the concentrations of these contaminants do not change frequently.

Contaminants	MRDLG	MRDL	Your Water	Range Low High	Sample Date	MRDL Exceeded	Typical Source
Disinfectants							

Chlorine <i>Units: Chlorine residual, ppm</i>	4	4	0.4507	0.32 0.55	2025	No	Drinking water additive used for disinfection
--	---	---	--------	-----------	------	----	---

Inorganic Contaminants

Arsenic <i>Units: ppb</i>	0	10	1.8	N/A N/A	2022	No	Erosion of natural deposits; runoff from orchards; glass and electronics production wastes
Barium <i>Units: ppm</i>	2	2	0.1	N/A N/A	2022	No	Discharge of oil drilling wastes and from metal refineries; erosion of natural deposits
Fluoride <i>Units: ppm</i>	4	4	0.4	N/A N/A	2022	No	Erosion of natural deposits; water additive which promotes strong teeth; discharge from fertilizer and aluminum factories
Selenium <i>Units: ppb</i>	50	50	2.3	N/A N/A	2022	No	Petroleum, glass, metal refineries; erosion of natural deposits; discharge from mines and chemical manufacturers; livestock lot runoff
Nitrate/Nitrite <i>Units: ppm</i>	10	10	0.73	N/A N/A	2025	No	Petroleum, glass, metal refineries; erosion of natural deposits; discharge from mines and chemical manufacturers; livestock lot runoff
Sodium (NR) <i>Units: ppm</i>	N/A	N/A	61	N/A N/A	2023	No	Erosion of natural deposits; saltwater intrusion

Contaminants	ALG	Action Level	Your Water	Range Low High	Sample Date	A.L Exceeded	Typical Source
Lead and Copper Rule							

Copper <i>Units: ppm - 90th Percentile</i>	1.3	1.3	0.0781	N/A	N/A	2025	No	Corrosion of household plumbing systems; erosion of natural deposits; leaching from wood preservatives
				0 sites over Action Level				
Lead <i>Units: ppb - 90th Percentile</i>	0	15	0.11	N/A	N/A	2025	No	Corrosion of household water plumbing systems; discharges from industrial manufacturers; erosion of natural deposits
				0 sites over Action Level				

Radiological Contaminants

Adjusted Alpha (Excl. Radon & U) <i>Units: pCi/L</i>	0	15	3.89	N/A	N/A	2025	No	Erosion of natural deposits
Combined Radium <i>226/228 Units: pCi/L</i>	0	5	0.0957	N/A	N/A	2025	No	Erosion of natural deposits
Beta Photon Emitters <i>Units: pCi/L</i>	0	50	3.37	NA	NA	2025	No	Decay of natural and man-made deposits.
Uranium (combined) <i>Units: ppb</i>	0	30	8.6	N/A	N/A	2025	No	Erosion of natural deposits

Special Statements

Educational Statement for Lead

Lead can cause serious health problems, especially for pregnant women and young children. Lead in drinking water is primarily from materials and components associated with service lines and home plumbing. Santa Clara Pueblo is responsible for providing high quality drinking water and removing lead pipes but cannot control the variety of materials used in plumbing components in your home. You share the responsibility for protecting yourself and your family from the lead in your home plumbing. You can take responsibility by identifying and removing lead materials within your home plumbing and taking steps to reduce your family’s risk. Before drinking tap water, flush your pipes for several minutes by running your tap, taking a shower, doing laundry or a load of dishes. You can also use a filter certified by an American National Standards Institute accredited certifier to reduce lead in drinking water. If you are concerned about lead in your water and wish to have your water tested, contact your water utility. Information on lead in drinking water, testing methods, and steps you can take to minimize exposure is available at <http://www.epa.gov/safewater/lead>.

Service Line Inventory

In 2024, Santa Clara Pueblo was required to complete an inventory of service line materials to determine whether any service lines connected to the distribution system are made of lead material. The service line inventory is available upon request, please contact us for more information.

Additional Information on Lead

Exposure to lead in drinking water can cause serious health effects in all age groups. Infants and children can have decreases in IQ and attention span. Lead exposure can lead to new learning and behavior problems or exacerbate existing learning and behavior problems. The children of women who are exposed to lead before or during pregnancy can have increased risk of these adverse health effects. Adults can have increased risks of heart disease, high blood pressure, kidney or nervous system problems.

Definitions

Term	Definition
ppm	parts per million, or milligrams per liter (mg/L)
ppb	parts per billion, or microgram per liter (ug/L)
Positive samples	the number of coliform positive samples taken that year
% positive samples/month	% of samples taken monthly that were positive
ND	Not detected
NR	Not regulated, but monitoring is highly recommended
N/A	Not applicable
MCLG	Maximum Contaminant Level Goal: The level of a contaminant in drinking water below which there is no known or expected risk to health. MCLGs allow for a margin of safety.
MCL	Maximum Contaminant Level: The highest level of a contaminant that is allowed in drinking water. MCLs are set as close to the MCLGs as feasible using the best available treatment technology.
MRDL	Maximum Residual Disinfectant Level
MRDLG	Maximum Residual Disinfectant Level Goal
TT	Treatment Technique: A required process intended to reduce the level of a contaminant in drinking water.
AL	Action Level: The concentration of a contaminant which, if exceeded, trigger treatment or other requirements which a water system must follow.
90th Percentile	Statistical value used to determine if Action Level is exceeded. Determined by calculating the value at which 90% of the samples tested were below that value.

For more information, please contact:

Steven Trujillo, Utilities Director
 578 Kee Street
 Espanola, NM 87532
 Phone: 505 753 – 7326 x1239
satrujillo@santaclarapueblo.org

JUNE 2026



Summer Reading Program – SCP Community Library Site

The State established the Summer Reading Program in 2024. The Summer Reading Program is a literacy instruction and intervention program that will support 10,000 New Mexico students from incoming kindergarteners through outgoing eighth graders.

The Summer Reading Program objectives are the following:

Small group instruction, 4 students per group

4-week program with 4 hours a day of instruction

The Summer Reading Program is a free program for New Mexico students funded by the State of New Mexico. [Sign up is required: literacy.nm.gov](https://literacy.nm.gov)

Sunday	Monday	Tuesday	Wednesday	Thursday	Friday	Saturday
	1 TUTORING CONTINUES 3-4:30 - OPEN TO STUDENTS GR 1-6	2 TUTORING 3-4:30	3 TUTORING 3-4:30 (LAST DAY)	4 (Registration closed) Free Summer Reading Program begins - Pre-Test	5 Reading pre-test	6
7	8 (Registration Closed) NM Free Reading Program M-TH 8:30 - 12:30 Thru 7-2-26	9	10	11	12 St. Anthony's Feast Day Observed - Closed	13 Saint Anthony's Feast
14	15 NM Free Reading Program M-TH 8:30 - 12:30 Thru 7-2-26	16	17	18	19 Juneteenth Day - Closed	20
21	22 NM Free Reading Program M-TH 8:30 - 12:30 Thru 7-2-26	23	24	25	26 Movie Day 1-3pm "Indiana Jones & the Last Crusade" 	27
28	29 NM Free Reading Program M-TH 8:30 - 12:30 Thru 7-2-26	30				



NEW MEXICO
CAREGIVERS
COALITION

Tel: 505.867.6046 Email: info@nmdcc.org

APPLY FOR LIFESPAN RESPITE CARE REIMBURSEMENT

New Mexico Caregivers Coalition is pleased to partner with the New Mexico Aging and Long-Term Services Department to provide cash [Lifespan Respite Care Vouchers](#) to ***qualifying caregivers living in rural and on tribal lands of New Mexico.***

The purpose of the Lifespan Respite Voucher program is to provide financial relief to caregivers who have a need for respite care.

There are a limited number of vouchers remaining in this current fiscal year. To take advantage of this opportunity, caregivers *must apply on or before June 12, 2026.* One voucher in the amount of up to \$500 is available to a qualifying caregiver.

Funds will be awarded--on a first-come, first-served basis--to ***qualifying caregivers living in rural and on tribal lands in New Mexico*** until all funds are expended.

Apply here: [Lifespan Respite Care Vouchers](#) on or before June 12, 2026.

The New Mexico Caregivers Coalition is a statewide 501(c)3 organization created to promote the voice of family and professional caregivers and those they serve. We advocate for direct care workers' education, training, benefits, wages and professional development. Support our work by getting involved in this and other dialogues of NMCC.

P.O. Box 297, Bernalillo, NM 87004 (505) 867-6046



Albuquerque Fisher House
1501 San Pedro Dr. SE Bldg. 85
Albuquerque, New Mexico 87108
(505) 265-1711 Ext. 3180 ABQFisherHouse@va.gov

A “home away from home” allowing families and loved ones to be close during an inpatient stay and to focus on what's important--**the healing process.**

Inpatient Veteran Families Fisher House

A member of the inpatient Veterans Care Team must enter the request, a family member cannot call directly

FISHER HOUSE ELIGIBILITY CRITERIA (50 FAMILIA)

- ~50 miles/from ABQ Fisher House
- ~Family member/caregiver of an inpatient Veteran at the VA
- ~Actively engaged in the inpatient's treatment plan
- ~Medically stable and capable of self-care (Guest must be)
- ~Independent and able to live in a shared space setting
- ~Living in stable, permanent housing (not homeless)
- ~Is free from communicable illness (flu, chicken pox, measles, C-Diff, COVID, etc.)
- ~Agrees to the Fisher House Guest Agreement and Rules

Outpatient Veteran Heroes’ Hall NMVA Accommodations

NMVA HEROES HALL ELIGIBILITY CRITERIA

- ~Short-term lodging for Veterans, average stay is one night
- ~Companion providing transportation may be lodged
- ~No children are allowed
- ~**Veterans call Heroes Hall directly to make a reservation:** (505) 265-1711 Ext. 4555
- ~Veterans must meet eligibility requirements
 - Must live 120 miles away
 - Must have an appointment at the NMVA
 - Veteran must be independent and clinically stable
- ~Exceptions to stay more than one night must be approved

Active-Duty

The Albuquerque Fisher House provides “a home away from home” for eligible Active-Duty families patients receiving medical care at a medical facility in the Albuquerque area.

Active-Duty: A Care team member, Chain of Command, Medical facility, or family member please call Albuquerque Fisher House directly (505) 265-1711 Ext. 3180

Fisher House Questions?

If you have questions, please call the Albuquerque Fisher House, we are here to assist you and the Care team.

(505) 265-1711 Ext. 3180



ALBUQUERQUE FISHER HOUSE
because A Family's Love is Good Medicine



SANTA CLARA PUEBLO HEAD START NOW ACCEPTING APPLICATIONS

**A Loving
Start for
Little
Learners**

We provide an excellent curriculum that allows your child to learn through play and social interactions



**Fun learning
Caring teachers
Safe environment**

To apply for the 26/27 school year, child must be 3 years old by September 1, 2026.

DOCUMENTS REQUIRED

- BIRTH CERTIFICATION
- PROOF PUBLIC ASSISTANCE
- PROOF OF RESIDENCY
- HEALTH INSURANCE CARD
- CIB (IF APPLICABLE)

**OPENING
HOURS:
8:00AM -
2:30PM**



Enroll today!

**KMARQUEZ@SANTACLARAPUEBLO.ORG
CALL: 505-692-6235**



SANTA CLARA PUEBLO FORESTRY DEPARTMENT

**WE'RE HIRING TEMPORARY CONTRACT WORKERS FROM THE COMMUNITY
AND SURROUNDING COMMUNITIES**

3-4 Crew Members, \$17.00 an hour:

Applicants must be 18 years of age or older and must have a reliable vehicle, with current insurance, and a valid Driver's License. You must be able to obtain a business license from Santa Clara Pueblo Tax Department.

If interested or have any questions, please call Ivan Shije at the Santa Clara Pueblo Forestry office at (505) 692-6274. For applications, please see or call the Santa Clara Pueblo Human Resources Department.

BANDELIER PRESERVATION CREW

ROCKY MOUNTAIN YOUTH CORPS



- May 11/June 1 – July 31
- Mon–Fri, 8 AM – 4:30 PM
- Weekends & holidays off
- Work outdoors & on a team

Leadership & Entry Level Positions

- Crew Supervisors @ \$18/hour
- Assistant Crew Leaders @ \$680/week + education award

No experience? No problem!

- Crew Members @ \$650/week + education award

Apply Now!

youthcorps.org



SEASONAL EMPLOYMENT OPPORTUNITIES

Seasonal employees begin arriving in the spring and by early July more than 600 team members are on site for the many operations that bring the summer season to life.

THE
SANTA FE
OPERA

Box Office Representative (Mid-May – August)

Support ticketing operations and serve as a primary point of contact for patrons.

- Process ticket orders via phone, online and in person
- Provide accurate information about performances and services
- Assist with customer inquiries and order management
- Handle transactions and maintain organized records

[APPLY
NOW](#)

This role requires strong attention to detail, customer service skills and schedule flexibility during the season.

Usher (Performance Season)

Welcome and assist patrons during performances and rehearsals.

- Greet guests and distribute program books
- Guide patrons to seating and provide venue information
- Support a safe and orderly theater environment
- Enforce house policies with professionalism

[APPLY
NOW](#)

Evening availability required. Ideal for individuals who enjoy working in a fast-paced, public-facing environment.

Theater Custodial and Maintenance Staff (Seasonal)

Maintain the cleanliness and appearance of the Opera's buildings and grounds throughout the season.

- Prepare indoor and outdoor spaces for nightly performances
- Clean restrooms, public areas and backstage facilities
- Support recycling, waste removal and general upkeep
- Assist with seasonal maintenance projects

[APPLY
NOW](#)

Full-time seasonal schedule with daytime hours and weekend work.

Opera Shop Night Cashier (Seasonal)

Provide a welcoming retail experience for patrons during performance evenings.

- Process sales transactions accurately and efficiently
- Maintain store appearance and stock levels
- Support inventory organization and store security
- Deliver strong customer service in a fast-paced setting

[APPLY
NOW](#)

Evening shifts only. Seasonal hourly position.

Gardener (April – September)

Support the care and maintenance of the Opera's gardens and landscaped spaces.

- Prepare and maintain flower beds, planters and grounds
- Care for plants suited to high-desert environments
- Assist with seasonal planting and upkeep
- Work outdoors in a collaborative team setting

[APPLY
NOW](#)

Part-time seasonal role with weekday and weekend hours.

YEAR-ROUND EMPLOYMENT OPPORTUNITIES

At Santa Fe Opera, approximately 70 staff members work throughout the year across production, facilities, administration and operations, supporting the company's campus and programs year-round.

Security Guard

Maintain a safe and secure environment across the Opera campus. This role supports daily operations through active monitoring, patrol and incident response.

- Monitor entry points, campus access and security communications
- Conduct routine patrols of buildings and grounds
- Respond to alarms and report incidents in a timely manner
- Prepare detailed reports and maintain daily activity logs
- Collaborate with supervisors to address safety concerns

[APPLY
NOW](#)

Full- and part-time hours available, including evenings, weekends and on-call shifts.

Security Supervisor

Lead and support the security team while overseeing campus-wide safety operations. This role combines hands-on security work with team leadership and coordination.

- Supervise and schedule security personnel
- Monitor systems, conduct audits and assess risk
- Respond to and investigate incidents
- Coordinate with law enforcement and emergency services
- Train staff in safety protocols and emergency preparedness

[APPLY
NOW](#)

Full-time, year-round position with benefits.

Santa Clara Pueblo Head Start

**WE ARE
HIRING!**

**APPLY
NOW!!**

JOIN OUR TEAM

JOB POSITIONS:

TEACHER

TEACHER ASSISTANT

ERSEA/ FAMILY SERVICES

COORDINATOR

DIRECTOR

FOR MORE INFORMATION

SUBMIT YOUR APPLICATION & RESUME

Santa Clara Pueblo Human Resources:

P.O. Box 580 Española, NM 87532

Email: jobs@santaclarapueblo.org

call (505) 692-6280





Slots

- Slot Systems Administrator**
- Slot Supervisor**
- Slot Service Specialist**

Player Services

- Main Banker**
- Player Services Representative**

Food & Beverage

- Server*
- Bartender/Server*
- Grab & Go Attendant*
- Prep Cook*
- Dishwasher*
- Sous Chef
- Lead Grab & Go Attendant*
- Supervisor*
- Kitchen Manager*
- Busser*
- Banquet Server*
- Banquet Set up*

Hotel

- Director of Hotel Operations*
- Operations Manager*
- Guest Service Agent*
- Housekeeping Attendant*
- Housekeeping Supervisor*
- Night Auditor*
- Guest Service Supervisor*

Bowling

- Bowling Attendant*

Marketing

- Graphic Artist (on-site)**
- Marketing Coordinator (on-site)**

Golf

- Grounds Keeper Seasonal*
- Cart Barn Attendant Seasonal*
- Bartender/server Seasonal*

Compliance

- Internal Auditor**

IT

- System Administrator (on-site)**

Finance

- Construction Staff Accountant*
- Count Team Member**
- Revenue Auditor**

Surveillance

- Surveillance Agent I**
- Surveillance Agent II/Tech**
- Supervisor**

Security

- Security Officer Level I**
- Security Officer Level II**
- Security Officer Level III**
- Security Shift Supervisor**
- Security Shift Manager**

Construction

- Superintendent*
- Project Manager*
- Laborer*

Facilities

- HVAC Tech*
- Maintenance Engineer*

EVS (Housekeeping)

- Casino Supervisor*
- Casino Associate*

Retail

- Retail Associate*
- Puye Cliffs Tour Guide*



Fat Burger

- Team Member*

16+*

18+*

21+*

Gaming License Required*

To apply, please visit our career listings at www.santaclaran.com/careers or visit the Human Resources Office.



HUMAN RESOURCES DEPARTMENT
SANTA CLARA PUEBLO TRIBAL ADMINISTRATION
578 Kee Street, Espanola, New Mexico 87532
Phone: (505) 692-6280 Fax: (505) 747-2748

EMPLOYMENT OPPORTUNITIES

Updated: 05/29/2026

Adult Day Care

- (1) Activities Coordinator-Temporary position

Behavioral Health

- (1) Clinician
- (1) Case Manager/CHR Generalist

Custodial

- (2) Custodian

Department of Youth & Learning

- (1) Out of School Time Program Manager

Forestry

- (1) Forest Development Tech Intern
- (1) Heavy Equipment Supervisor
- (1) RTRL Crew Lead

Head Start

- (1) Head Start Director
- (2) Teacher
- (1) Head Start Teaching Assistant
- (1) Family Services/ERSEA Coordinator

Law Enforcement

- (1) Lieutenant
- (3) Radio Communication Specialist I

Public Works

- (1) Plumber

Self-Governance

- (1) Agricultural Manager

Senior Center

- (1) Meals on Wheels/Meal Prep

Social Services

- (1) Tribal Social Caseworker

Tax Administration

- (1) Tax Administrator

Position Requirements:

- Must be able to successfully pass a Background Check
- Must not have any DUI's/DWI's convictions within the last five years from any Tribal, State or Federal Court
- Must have a valid New Mexico Driver's License and be insurable through the Tribe's insurance carrier

PREFERENCE

*Tribal member/Native American preference shall apply to all positions at the Santa Clara Pueblo Tribal Administration
Santa Clara Pueblo Tribal Administration is a drug/alcohol free workplace*

All applicants must meet the minimum required qualifications for the position.

All positions are open until filled

For a copy of the position descriptions, or more information please contact the Santa Clara Tribal Administration's Human Resources Department email: jobs@santaclarapueblo.org

or call (505) 692-6280

ALL APPLICATIONS MUST BE COMPLETED THOROUGHLY AND SUBMITTED TO THE HUMAN RESOURCES OFFICE